

# VACCINATION CENTERS

## COVID-19



**BE PREPARED!**



BECAUSE SPACE IS VALUABLE!

# GOVERNMENTAL RECOMMENDATIONS

## Organization of COVID-19 Vaccination

### Areas and Functions

In their recommendation for the organization and implementation of immunization against Sars-CoV-2, the German Federal Ministry of Health has provided an overview of the

areas and their functions with detailed specifications of all tasks and structures regarding process, hygiene and safety. Benefit from our professional competence for an individual adaptation to your local situation.



Area		Functions
Vaccination Center Management		<ul style="list-style-type: none"> <li>management of the vaccination center (office)</li> <li>staff rest room and changing room</li> </ul>
Vaccination Area	Administration	<ul style="list-style-type: none"> <li>administration</li> <li>„check-in“, vaccine eligibility check</li> <li>„check-out“</li> <li>language mediation</li> </ul>
	Information and Vaccination	<ul style="list-style-type: none"> <li>information and advice, indication testing</li> <li>vaccination, documentation</li> <li>observation and first aid, if necessary</li> </ul>
Infrastructure	People Flow Management and Security	<ul style="list-style-type: none"> <li>arrival + distribution of face masks for people to be vaccinated</li> <li>waiting areas</li> <li>exit + disposal of face masks for people to be vaccinated</li> <li>physical security of the building incl. vaccines and accessories</li> </ul>
	Facility Management*	<ul style="list-style-type: none"> <li>facility management (maintenance and repair)</li> <li>sanitary facilities</li> <li>cleaning and disposal</li> </ul>
	Logistics (incl. Vaccine Management)	<ul style="list-style-type: none"> <li>material storage</li> <li>vaccine storage</li> <li>vaccine handling</li> </ul>

\* For sanitary facilities and disposal, we recommend using existing infrastructures.

# PROCESS, HYGIENE & SAFETY CONCEPT FOR VACCINATION CENTERS

## Are you prepared for the situation?

Our partition wall system is perfectly suited for this kind of application. It can also be used for the construction of COVID-19 test stations or emergency shelters.



## Our system: Ready to use. Everywhere.

The simple construction principle of uprights and beams allows for a quick and easy assembly and dismantling of our system. Guaranteed by the use of high quality aluminium extrusions and the inherent modular design. Many years of experience in the construction of partition walls, cabins for emergency shelters and test stations make us the most professional and reliable partner at your side. A sustainable system – all the way from planning to realization.

## Advantages:

- easy to clean
- modular and flexible
- fast setup
- changeable labeling of the rooms
- reusable and sustainable
- light weight (aluminium)

## Technical Information:

- upright: 40 × 40 mm
- standard height: 2500 mm
- panel infill: 4 mm  
PVC hard foam board (B1)



Connection: upright and beam with tension lock

**ADAPTABLE  
REUSABLE  
RELIABLE!  
SAFE VACCINATION OF  
UP TO 8000 PATIENTS A DAY.**

# IMMUNIZATION CONCEPT

## COVID-19 Vaccination Centers

### Check-In / Registration

A structured process is essential for a fast and safe handling. With our vaccination centers, not only you but also the patients benefit from a high standard of hygiene through distance markings, disinfection possibilities and a one-way guidance system that also ensures shorter waiting times.



### Vaccination Area

Employee protection and safety are the first priority here. A controlled flow of visitors makes sure that there is only one patient per treatment room for vaccination, with additional screens contributing to more privacy. The labeling of the rooms can be changed and adapted to legal requirements at any time.



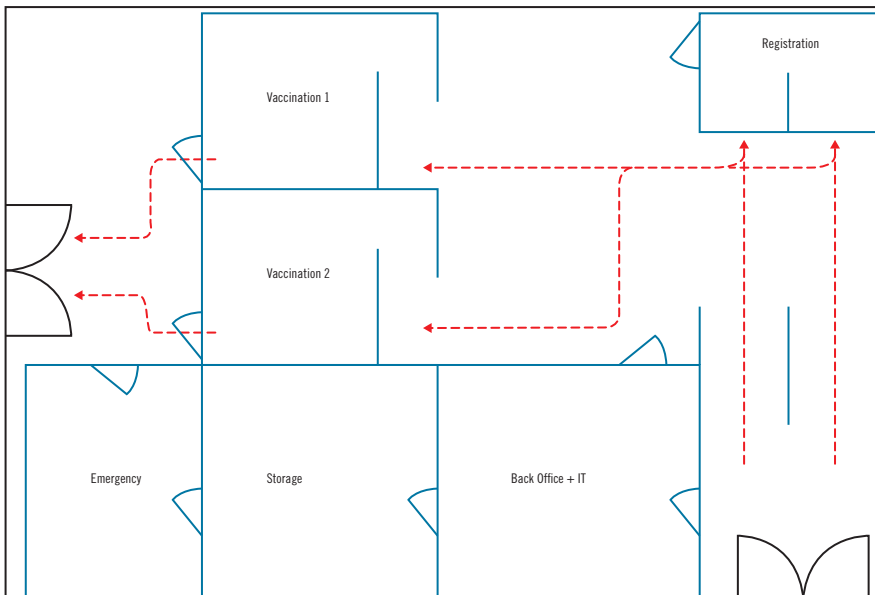
### Back Office, Staff and Storage Rooms

From changing rooms to staff break rooms, from emergency cabins to back office and lockable storage rooms for medical equipment – our modular partition wall system helps you create a vaccination center that meets all your individual needs and requirements.



## EXAMPLE 1: HALL 15 × 10 M

Vaccination Capacity: 400 Patients/Day



**VACCINATION  
CENTER FOR  
UP TO 400  
PATIENTS/DAY.**

### Example Vaccination Center Community Hall 15 × 10 m:

- 2 × Registration
- 2 × Treatment Room
- 1 × Back Office + IT
- 1 × Storage Room
- 1 × Emergency Room

### Partition walls to create new rooms for small halls.

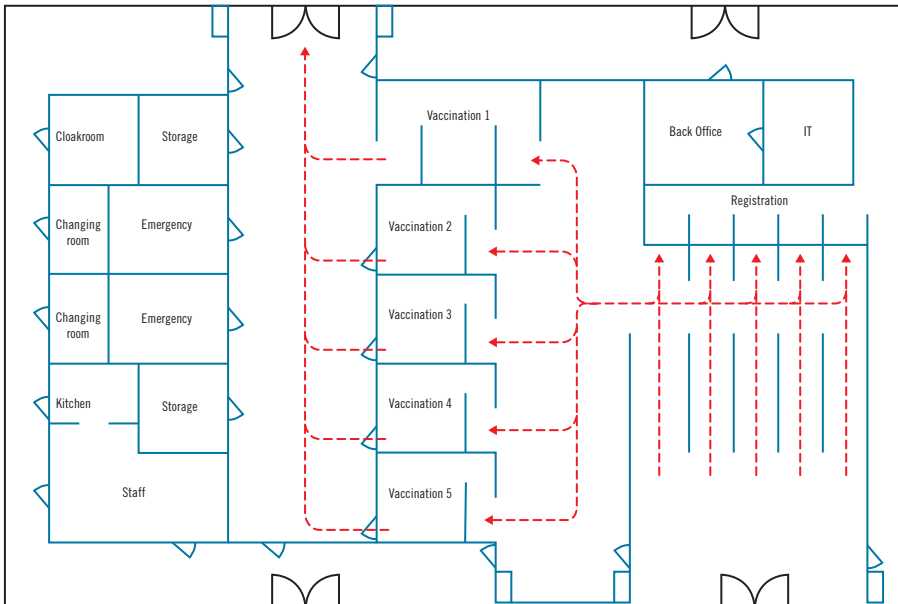
Our partition wall system is ideal for the creation of a new room layout. Temporary – without leaving any traces. And, if requested, mobile with castors or as space-saving folding wall (for accessories, see page 7).

## EXAMPLE 2: HALL 30 × 20 M

Vaccination Capacity: 1000 Patients/Day

### Plan and procure now

... to make sure that medium-sized sports and event halls can be converted into vaccination centers in just a few hours.



### Example Vaccination Center Sports Hall 30 × 20 m:

- 5 × Registration
- 5 × Treatment Room
- 2 × Storage Room
- 2 × Emergency Room
- 2 × Changing Room
- 1 × Back Office
- 1 × IT
- 1 × Cloakroom
- 1 × Break Room + Kitchen

**VACCINATION  
CENTER FOR  
UP TO 1000  
PATIENTS/DAY.**



## EXAMPLE 3: HALL 120 × 70 M

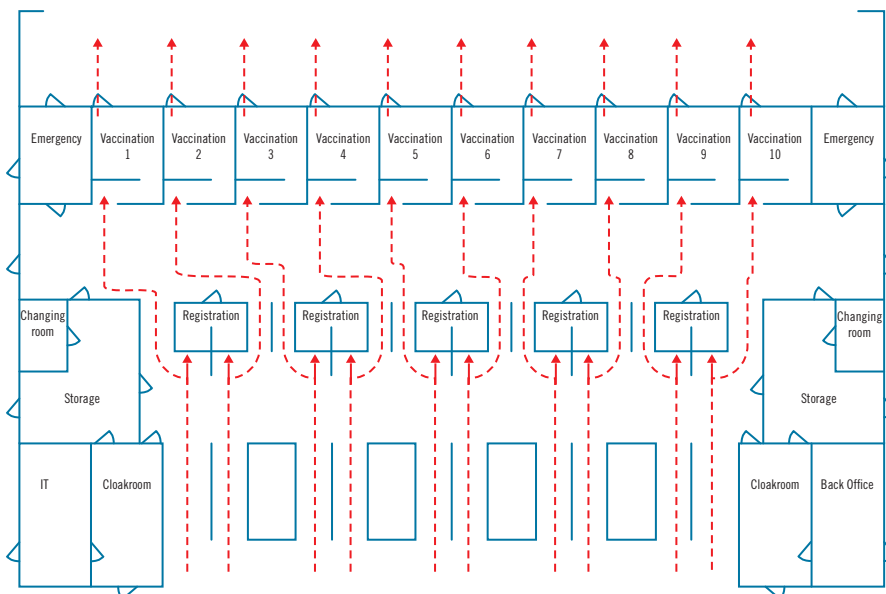
Vaccination Capacity: 8000 Patients/Day



### A partition wall system for large-scale locations.

Large halls provide capacity for a large number of vaccinations at the same time. Available in large quantities if procured early and quickly assembled, our partition wall system is simply perfect for the optimal equipment of large halls.

## VACCINATION CENTER FOR UP TO 8000 PATIENTS/DAY.



### Example Vaccination Center Congress Hall 120 × 70 m (4 × floor plan on the left):

- 40 × Registration
- 40 × Treatment Room
- 8 × Storage Room
- 8 × Emergency Room
- 8 × Changing Room
- 8 × Cloakroom
- 4 × Back Office
- 4 × IT

# ACCESSORIES

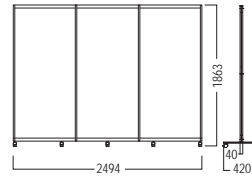
## Additional Safety

### MOBILE PARTITION WALL FOLDABLE, WITH CASTORS 2994 × 420 × 1863 MM



#### ST 1825.01

**Aluminium** | Foldable and mobile partition wall, consisting of 3 foldable modules, incl. 5 × castor S 745, 2 × castor lockable S 746, 6 × filling made of PVC, panel dimensions: 4 × W 812 × H 852 mm, 2 × W 762 × H 852 mm, PVC hard foam board 4 mm

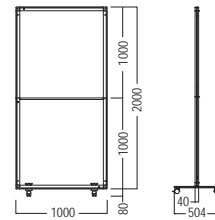


### MOBILE PARTITION WALL TOOLLESS, WITH CASTORS WITH ANTIBACTERIAL FABRIC



#### W 404MSBR.01

**Aluminium** | 1 × freestanding and collapsible frame made of W 906, 1000 × 2000 × 40 mm, for fabric/panel on both sides, with toolfree plug-in connection, with 2 × foot bracket PS-80/8, incl. 1 × castor S 745, 1 × castor lockable S 746, with bracing, 4 × knuckle joint W 916M, 2 × straight connector OL 240M, 2 × antibacterial fabric SF 453 (printed), without hook tape W 840



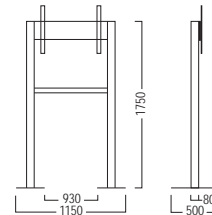
**1** The partition walls are available in different sizes and designs.

### MONITOR POLE SET FOR 36"-52"-MONITORS



#### VA 5524.01

**Aluminium/Steel** | Set including: 2 × square upright M 1018 (80 mm), 2 × base plate VA 5524/1, 1 × monitor fixing set E 195, 1 × beam Z 400, 2 × tension lock Z 961/13 for monitor mounted on one side, monitor can be mounted straight or at an angle of 8° max., for LCD screens 36"-52"

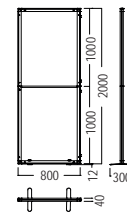


### INFORMATION PANEL TOOLLESS 800 × 2000 × 40 MM



#### W 401M.01

**Aluminium** | 1 × freestanding and collapsible frame made of W 906, for double-sided fabric, with plugable connection, with 2 × rotatable foot plate M 1956 and bracing, 4 × corner connector W 916M, 2 × straight connector OL 240M



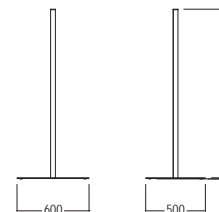
**1** for individual fabric graphics (image for reference only)

### HAND SANITIZER STAND WITH DISPENSER INCL. SENSOR



#### ST 1250S.01

**Aluminium** | mobile and collapsible stand with 1 × dispenser, 1 × base plate OP 156/1 1 × extrusion M 1201, 1 × end plate M 1215





**IntraSpace Pty Ltd**  
**Efficient Workspace Solutions**

- \ Mobile & Static Shelving Specialists
- \ Clinical Storage Fitouts
- \ Sterile Shelving & Trolleys
- \ Office Furniture & Seating
- \ Lockers & Safe Storage
- \ Contemporary Storage Furniture
- \ Library Fitouts
- \ Display Solutions

---

27 - 29 Gerves Drive  
P.O. Box 2250  
Werribee VIC 3030

**Freecall 1800 800 573**

**T** +61 (03) 9742 2262  
**F** +61 (03) 9742 2402  
**E** [info@intraspace.com.au](mailto:info@intraspace.com.au)

[intraspace.com.au](http://intraspace.com.au)